

## MONTAGEHANDLEIDING

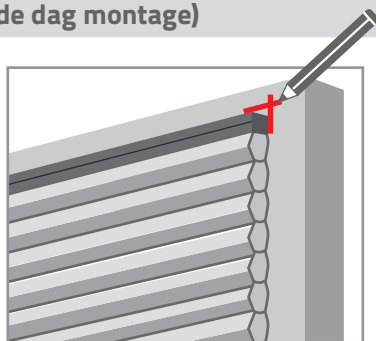
Dupligordijn Energy  
Shade RH10



### ✓ Stap 1: Markeren (op de dag montage)

Bij een op de dag montage:

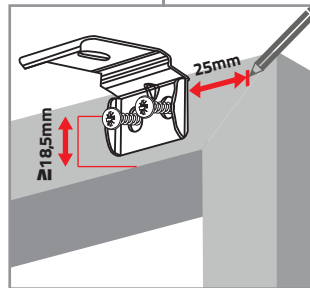
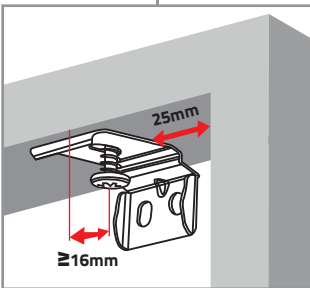
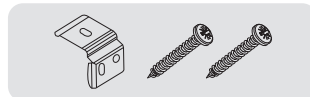
Houd het gordijn op de gewenste locatie en markeer de uiteinden.



### ✓ Stap 2: Monteren beugel

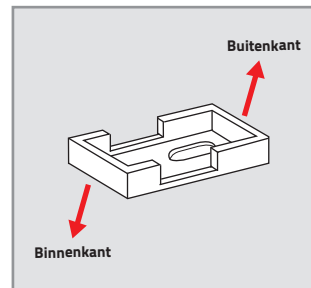
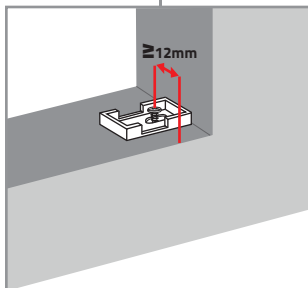
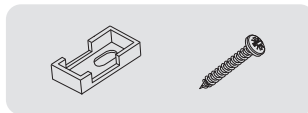
In de dag montage

Op de dag montage

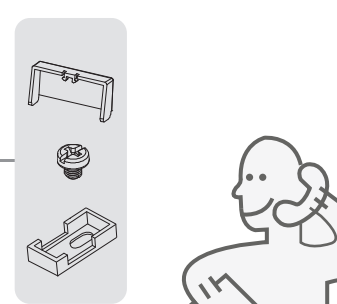
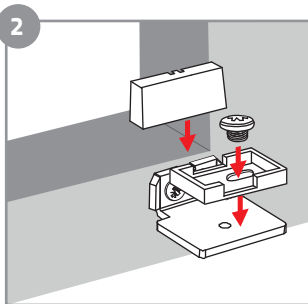
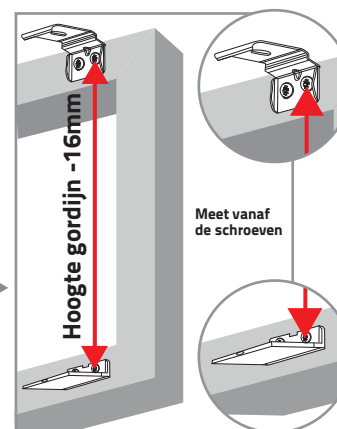
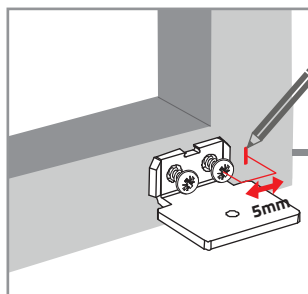
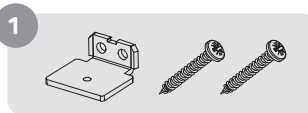


### ✓ Stap 3: Monteren schoentje en L beugel

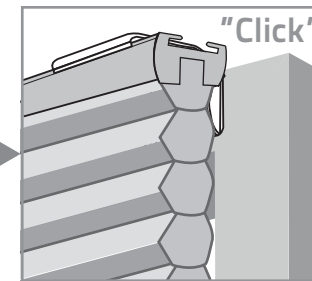
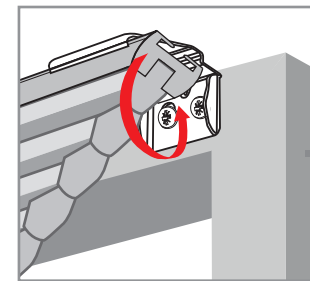
IN DE DAG MONTAGE



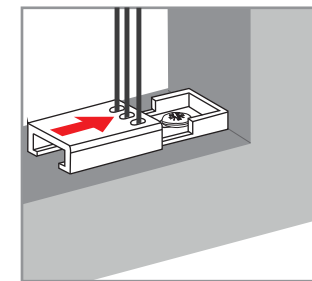
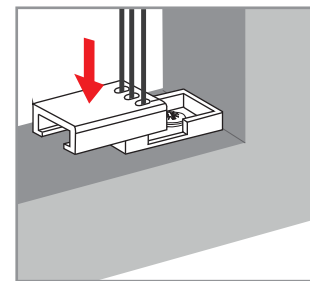
OP DE DAG MONTAGE



### ✓ Stap 4: Monteren rail



### ✓ Stap 5: Monteren schoenkapje



### ✓ Stap 6: Bevestigen bedieningsgreep

